

## **Summer Wheeled Motorized (Single Track)**

Motorcycle (wheeled summer-motorized, single track) riding in the Whitefish Range has been reduced since the adoption of the 1986 Flathead Forest Plan. Currently wheeled, summer motorized recreation of all types (passenger car, 4x4, motorcycle, quad, and other OHV's) is limited to year-round and seasonally-open roads and to the Cyclone Mountain trail (#40) (motorcycles only).

In 1975 the grizzly bear was listed as "Threatened" under the Endangered Species Act. The listing of the grizzly led to incremental reductions of trails and roads open to motorized vehicles in the summer months. The Flathead National Forest adopted Forest Plan Amendment #19 in 1995. This amendment required further road and trail closures to motorized recreationists (among other actions) for the purpose of establishing "core" areas of secure grizzly bear habitat and has led to the current motorized use limits in the Whitefish Range.

The Flathead National Forest must adopt the "Grizzly Bear Conservation Strategy" as part of its final forest plan revision. This document will replace Amendment #19 as the guiding document for road density standards and motor vehicle use under the revised forest plan.

The Whitefish Range Partnership discussed summer, wheeled motorized recreation in the Whitefish Range. The Partnership recognizes the current limitations placed on summer, wheeled motorized recreation. The Grizzly Bear Conservation Strategy may allow a relaxation of restrictions on summer, wheeled motorized recreation in the future.

### **Recommendation**

- The Partnership recommends that the Flathead National Forest establish a summer, wheeled motorized zone in the southeast part of the Whitefish Range and assess the opportunities for establishing single-track motorized route(s) in this zone. (See the map for details – next page.)

---

Tentatively Approved by WRP 10/XX/13

### **Committee Members**

Robbie Holman, Dave Hadden, Rick Anderson

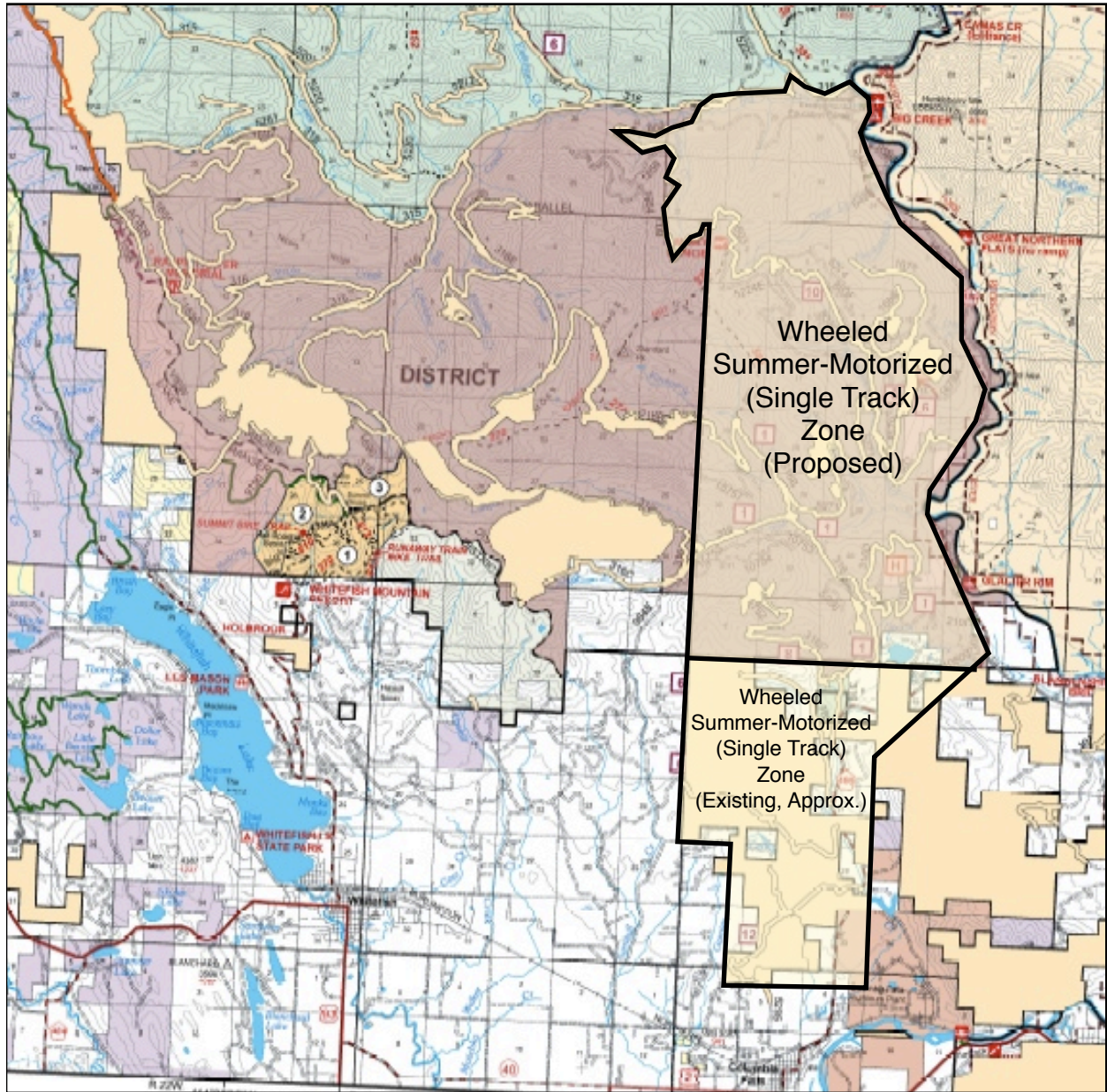


Exhibit A: The summer motorized (single track) zone proposed by the Whitefish Range Partnership for possible analysis by the Flathead National Forest after implementation of the Grizzly Bear Conservation Strategy.