

Having trouble viewing this email? [Click here](#)



Photo: Harvey Locke

[Home](#) | [Board & Staff](#) | [Goals](#) | [Events](#) | [Maps](#) | [Archives](#) | [Contact](#) | [Jack Potter Award](#)

Flathead Forest Needs to Hear from Wilderness Lovers

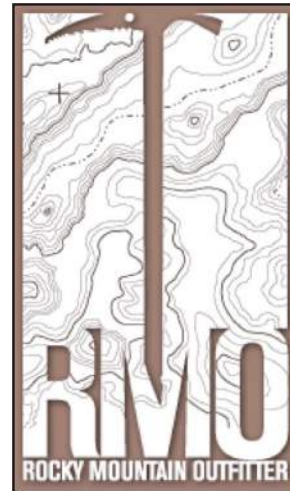
March 21, 2015

Dear Dave :

It's that time of the decade, I guess. The time when the Flathead National Forest asks again for our 'suggestions' and 'input' as to how they should manage the 2.2 million-acres of our backyard public lands. Last time we went through this exercise it was 2005.

To answer the question: It's obvious! Conserve the Forest! Manage it with foresight! *And hang on to the conservation gains of the last 20-years* when the nation demanded that forest managers go lighter on the land than they had over previous decades of hard exploitation.

While the grizzly bear and its advocates have been scapegoated for everything from the loss of "timber jobs", to closing off "public access", the fish and wildlife have rebounded and water quality has markedly improved. So has the local economy. Rather than having one Boss (Big Timber), the Flathead Valley economy - and the Montana



***Win a \$50 Gift
Certificate from
RMO!***

*Ok. We usually have the
"Please Donate" button here.
But today is you're lucky day,*

economy, too - has never been more diverse or vibrant.

Why is that? You'd think it was an accident. It's not. Local businesses have discovered that the Flathead National Forest provides much more than wood fiber for the mills. *It provides habitat for inspired and full living.*

Miracles of miracles, people moved here and continue to move here for the quality of life. Clean water, good communities, and access to Nature. Wilderness sells real estate and the goods that fill houses.

The Flathead National Forest intends to complete the revision of the forest land management plan in 2016. The roll-out of this new plan is supposed to coincide with the "de-listing" of the grizzly bear from the Endangered Species Act. The de-listing could usher in a new era of increased timber cutting.

Headwaters Montana can support an uptick in the harvest. But not at the expense of the conservation gains achieved to date. And, clearly, more must be done to repair past damages and to anticipate a changing climate.

Please help the Flathead National Forest read the tea leaves. Let them know what you value about your national forest public lands. We can't over-emphasize the importance of your personal comment. *It's time to step up!*

The "Proposed" forest plan can be found here. Please see the section below on specific comment suggestions. Send in your comment using the comment portal [here](#) and be entered to win one of three (3) **RMO \$50 gift certificates!** (See side bar, above)

Cheers and thanks for Stepping UP!



Executive Director
406-837-0783 / info@headwatersmontana.org

*and we want to give to you!
Headwaters Montana and RMO of Kalispell have teamed up to give away **THREE \$50 Gift Certificates** to be awarded at random to those who submit a comment to the Flathead National Forest. To enter this drawing, click [here](#) to submit your comment. Please read more below! And thanks!*



Comment Now

to Keep the Swan & Mission Mountains Wild

~ You Have Until May 5 ~



The Flathead National Forest has released its proposed management plan. The plan sets the stage for how the Flathead Forest and the wild lands in the **Swan, Mission, and Whitefish** mountains will be managed *over the next 20 years*.

The time is now to urge the Forest Service to include Wilderness protection for these three wild and deserving areas. Please tell the Forest Service to:

This map depicts additions (brown areas) to the Mission and Bob Marshall Wilderness Areas that will protect your wild lands and provide refuge for wildlife. Write to the Flathead National Forest today to support these additions. (Click [here](#) to view larger version of map!)

Expand the Jewel Basin Recommended Wilderness to the west and protect the wild Swan Front. Bring the wilderness boundary down to the valley floor.

Extend the Bob Marshall Wilderness north to include the wild and restored Bunker Creek and upper Sullivan Creek - critical areas for grizzlies, elk, mountain goats, and other wildlife species.

Widen the Mission Mountain Wilderness Area to include the wildlife corridor of **Sunset Ridge**, the critical bull trout spawning beds of **Elk** and **Hemlock** creeks, and the rugged, species-rich lower slopes.

You can also tell the Forest Service why wilderness is important to you and why they should protect more of it.

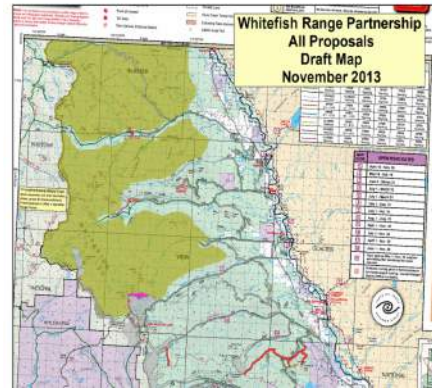
Please email your comments by **May 5** to flatheadplanrevision@fs.fed.us or snail mail to:

**Flathead National Forest Supervisors Office
Attention: Forest Plan Revision
650 Wolfpack Way**

Kalispell, MT 59901

(Submit your comments [on-line](#) and you'll be automatically entered to win one of three RMO \$50 gift certificates!)

So far the draft proposal provides protection for several deserving areas. For instance, Flathead Forest Service has largely adopted the [Whitefish Range Partnership's Wilderness recommendation](#) in the Whitefish Range. This includes over 80,000 acres of new wilderness! (See map at right) The Flathead also recognized two new areas along the Mission Mountain Wilderness that should be protected. But the Flathead Forest can do better!



Click [here](#) to view larger map of proposed Whitefish Range Wilderness

Please Donate

Please click [here](#) to donate. Your donation will help us promote protection of these wild lands, and help us reach hundreds of others. **Thank You!**

Headwaters Montana, Inc. | 4068370783 | info@headwatersmontana.org |
PO Box 4310, 511 Lakewood Court, Whitefish, MT 59937

Protecting the Water, Wildlife and Traditional Outdoor Heritage in the Crown of the Continent!

Copyright © 2014. All Rights Reserved.

[Forward this email](#)



This email was sent to dave_hadden@headwatersmontana.org by info@headwatersmontana.org | [Update Profile/Email Address](#) | Rapid removal with [SafeUnsubscribe™](#) | [Privacy Policy](#).



HEADWATERS MONTANA INC | PO Box 4310 | 511 Lakewood Court | Whitefish | MT | 59937