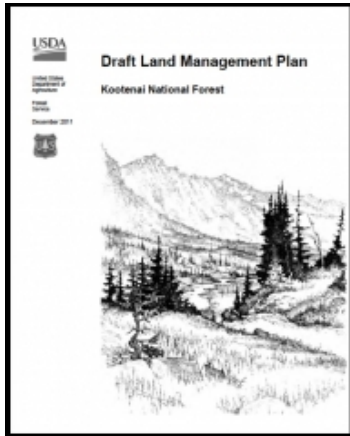
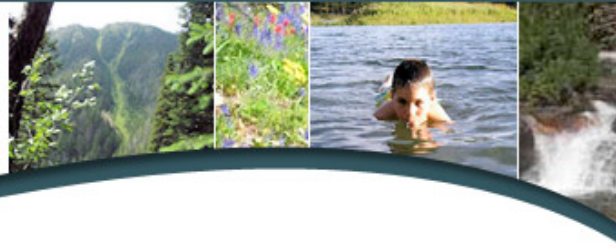
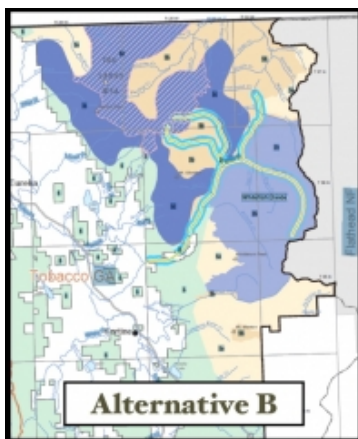


Share This: 

PROTECTING THE WATER, WILDLIFE AND OUTDOOR HERITAGE OF THE CROWN OF THE CONTINENT.



*The Proposed Revised Kootenai Forest Plan*  
 Released January 3rd, the new plan offers three alternatives. This important document proposes Recommended Wilderness, Backcountry, and protections for fish and wildlife habitat. However, the KNF's "Preferred Alternative B" falls far short of achieving minimum protections for these high public values. Your comments on the Plan - before the April 5 comment deadline - are essential!



Alternative B - the Kootenai Forest's

*To Read Back Issues of This Newsletter Click [Here](#)*

## ***Kootenai Forest Releases Draft EIS Some Good, Some Not So Good ~ Please Take a Moment to Comment***

January 19, 2012

Dear [member\_name\_first]:

On January 3, after over 5 years in the making, the Kootenai National Forest has released its [Draft Revised Forest Plan and associated Draft Impact Environmental Statement](#). It's a massive document, but not unapproachable. We ask that you commit some time to familiarize yourself with the essentials, attend an open house, and comment.

You can access all documents on-line [here](#).

The proposed Draft Plan offers a historic opportunity to protect the remaining roadless lands on the Kootenai Forest by including "recommended wilderness" and non-motorized "backcountry" designations.

The Ten Lakes Wilderness Study Area and adjoining landscapes are of particular concern to *Headwaters Montana*.

*Please participate!*

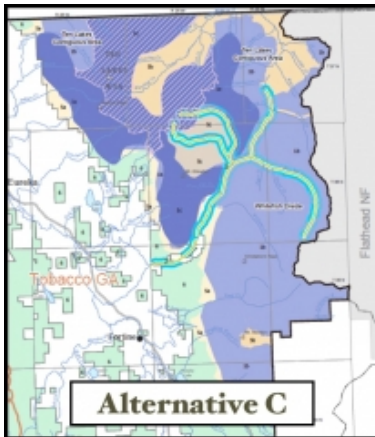
### **Background**

The Kootenai National Forest (KNF) has needed to revise its 1987 management plan. The KNF has done extensive outreach to the public including some collaborative work with various stakeholders, including *Headwaters Montana*. The resulting plan features 3 alternatives and one 'no-action' alternative.

The KNF's "preferred alternative" is [Alternative B](#). See the first map

Preferred Alternative

*This map shows details for just the Ten Lakes and Whitefish Range portions of the KNF. **ALL** alternative allows winter and **summer** motorized use of approximately half of the Ten Lakes Wilderness Study Area. Even more distressing, **ALL** alternatives allow a new motorized route through Therriault Pass - a very historic, non-motorized access point to Ten Lakes. See bottom illustration (below) for key to maps. (Click map to go to KNF document and map page to download a higher resolution map, or click [here](#) for low res map.)*



Alternative C - A Better Starting Place

*This map also shows just the Ten Lakes and Whitefish Divide area of the KNF. The alternative does a better job of protecting Wilderness-quality lands, and Roadless Lands. It also jeopardizes the Ten Lakes WSA. (Click map to go to KNF document and map page to download a higher resolution map, or click [here](#) for low res map.)*



(to left) that illustrates this alternative. This alternative falls far short of meeting essential conservation objectives.

*Headwaters Montana* prefers **Alternative C** - as a starting point for adjusting the Draft Plan. See second map (to left) that illustrates this alternative.

These maps provide the best summary of the proposed plan and the basis for recommending changes.

The Draft Forest Plan creates 11 new management areas (MAs) to replace the 24 currently found in the 1987 Plan.

The Draft Plan recommends an additional 36,300 acres for wilderness designation - but many worthy wilderness lands are omitted. It recommends **Scotchman Peaks** as a congressionally designated wilderness area and recommends additions to the existing **Cabinet Mountain Wilderness** (totaling 65,800 acres). The Draft Plan also recommends two new potential wilderness areas: **Roderick** and **Whitefish Divide** (totaling 47,000 acres).


Significantly, the Draft Plan does not recommend the Ten Lakes contiguous area, as found in the 1987 Plan.

The KNF proposes - in Alternative B - to harvest 47.5 million board feet annually, down from the 1987 Plan "Allowable Sales Quantity" of 150 million board feet annually. This lower target reflects federal budget constraints.

The formal public comment period ends April 5 . *Headwaters Montana* has requested a 45-day extension because of the size and complexity of the Draft Plan.

**What You Can Do**

The KNF *must hear from hundreds* of Wilderness and Roadless Lands supporters in order to be convinced of the public demand for greater protection than proposed in their preferred alternative (B)

<hr/>  <p><i>~ Thank you for donating! ~</i></p> <hr/>	<p><b>Email the KNF <a href="#">here</a>.</b></p> <p><b>Headwaters Montana will report back to you on further developments and comment opportunities as they arise. We will also send you additional specific comment suggestions that will improve roadless, wilderness, wildlife and water protection for the KNF.</b></p> <p><i><b><u>~Thank you for participating in protecting the Kootenai National Forest! ~</u></b></i></p> <hr/>
<p>Office: 545 Holt Drive, Bigfork, MT 59911   Invoices, etc: PO Box 4310, Whitefish, MT 59937 <a href="mailto:info@headwatersmontana.org">info@headwatersmontana.org</a>   <a href="http://www.headwatersmontana.org">www.headwatersmontana.org</a></p>	

This email was sent to .  
To ensure that you continue receiving our emails, please add us to your address book or safe list.

[manage](#) your preferences | [opt out](#) using TrueRemove®

Got this as a forward? [Sign up](#) to receive our future emails.

